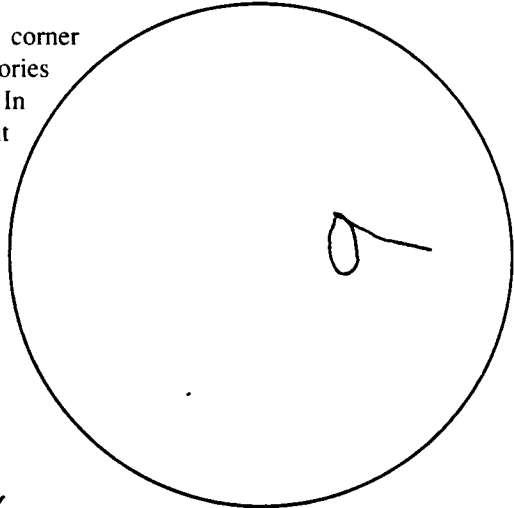


# Wyoming Certified Land Corner Recordation Certificate

*This form is to be completed in accordance with W.S. 36-11-101, printed in black ink or typed, and shall be for one individual corner.*

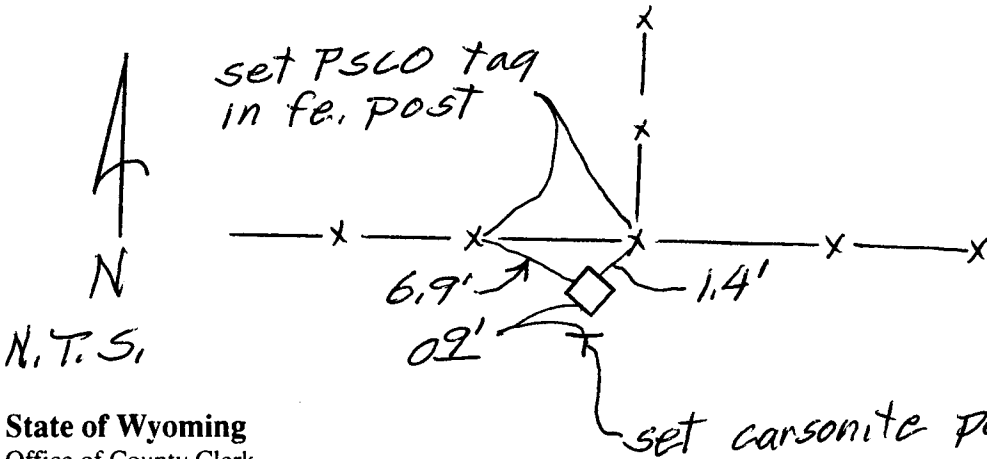
Describe below, or show in sketch attached to this form, the corner evidence found. Include condition and type of monument, accessories and ties. Describe any maintenance or rehabilitation performed. In the circle to the right, show monument inscription. If monument is determined lost or obliterated, restate the GLO or BLM original field note record; describe or show the procedure used to reestablish the corner and all data as above for a found monument.



Field Date 9/24/90 Office Reference \_\_\_\_\_

FOUND 6" sq. conc. monu.  
w/ nail in top center, proj.  
12" with "9" scribed on E. face

Monument Inscription



'90 DEC 13 PM 3 10

RECEIVED  
LARAMIE COUNTY  
CHEYENNE, WY.

078911

State of Wyoming  
Office of County Clerk  
County of \_\_\_\_\_

This Certified Land Corner Recordation Certificate was filed for record on the \_\_\_\_\_ day of \_\_\_\_\_, 19 \_\_\_\_, in Book No. T 14N, R 67W, on Alpha-Numeric coordinates J-15 and was noted on the Cross Index Plat.

*Janet C. Whitehead*  
County Clerk

Corner Type:  Aliquot Corner     Other    Section(s) 10/15    Meridian 6th  
Corner Name 1/4    Township 14N    Range 67W    Page \_\_\_\_\_  
Sheet 1 of 2

**Directions for using the Cross Index Plat**

Section, quarter and sixteenth corners will be marked with a dot at the corner location. The alpha-numeric coordinate number is then determined for the intersection of the two lines. A corner that applies to two or more townships shall be filed under all that apply by the use of photo copies.

Closing corners will be indexed under the township in which they control ownership. For 1/64, 1/256, 1/1024 and non-aliquot corners lying between grid designations, mark the appropriate grid area with a dot and use the index code to the north and west (local systems may be used if the method is approved by the County Surveyor or Clerk and a written description of its use is filed in the front of each book of certificates).

**Cross Index Plat**

1	2	3	4	5	6	7	8	9	10	11	12	13	14	15	16	17	18	19	20	21	22	23	24	25	
A																									A
B																									B
C		6																							C
D			5																						D
E				4																					E
F					3																				F
G						2																			G
H							1																		H
I																									I
J																									J
K																									K
L																									L
M																									M
N																									N
O																									O
P																									P
Q																									Q
R																									R
S																									S
T																									T
U																									U
V																									V
W																									W
X																									X
Y																									Y
Z																									Z
	1	2	3	4	5	6	7	8	9	10	11	12	13	14	15	16	17	18	19	20	21	22	23	24	25

**State Plane Coordinates (optional)**

Zone      W      WC      EC      E      feet/meters

NAD 1927       NGVD 1929       NAD 1983       NAVD 1988

North (Y) = \_\_\_\_\_ East (X) = \_\_\_\_\_ EL = \_\_\_\_\_

Latitude \_\_\_\_\_ Longitude \_\_\_\_\_

Scale Factor \_\_\_\_\_ Geoid Height \_\_\_\_\_

**Certification**

I, Doyle G. Abrahamson, Wyoming PLS PE 599 certify that I, or others under my supervision, have performed the work as described above and completed this form.

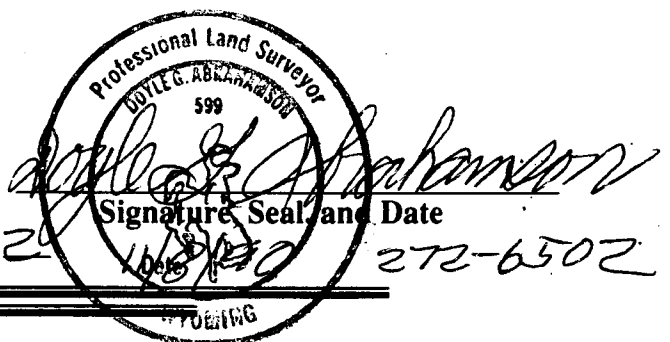
Company or Agency MERRICK & COMPANY

Mailing Address \_\_\_\_\_

Street Address 10855 E. Bethany Dr.

City, State, ZIP Aurora, CO. 80014

Telephone, FAX 303-751-0741 Fax 751-2581



Sheet 2 of 2

272-6502